



Master Elective
Drawing the
Human Figure

ID5462



Also subscribe for these other electives:

ID 5221 - Drawing Techniques for Presentation

ID 5252 - Basic Colour Skills

ID 5272 - Computer Sketching

ID 5247 - Automotive Sketching



Delft University of Technology
Faculty of Industrial Design Engineering
delft design drawing staff
www.delftdesigndrawing.com
sketching-IO@tudelft.nl

DELFT DESIGN DRAWING

Tekenonderwijs IO/IDE

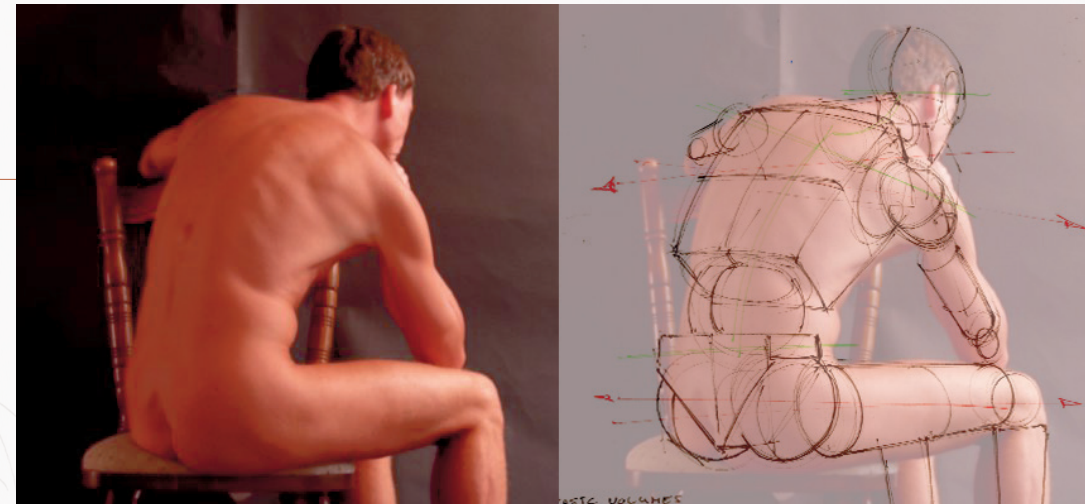
Drawing the Human Figure

ID5462

ECTS: 3
duration: 8 weeks
3 contact hrs/week



get familiar with charcoal sketching and its flexibility



analyse the human body and its building blocks

General info

'Drawing the human figure' reaches beyond the scope of only visualizing. By analyzing and reflecting on both the human model and the drawing thereof, students learn about postures, proportions and how bone structure and muscles define the outer figure. The course aims to provide the means to take the human dimensions into account when designing products for people. In design practice, human figure drawing is regarded as a very relevant asset.

Course Content

During a series of weekly sessions, students are taught how to draw the various human figures and postures, with the help of theoretic background and clear instructions, and they extensively practice and develop knowledge, insights and skills, by drawing manikins and live human models in specific positions.



draw in the studio from live observation



learn to quickly apply figure sketches in your ideation phase